



(Images are shown for illustration purposes only)

Project:

Product #:

Type:

KEY FEATURES

- Long lasting, full steel pole equipped to accommodate fixtures and their installation.
- Available in 15', 20', 25', and 30' lengths.
- Pre-drilled holes for easy installation.
- 2-piece ABS plastic base cover, rivets are included to secure pieces.
- 1 vendor for poles and fixtures, making for simple shipping and fast customer service experience.

SPECIFICATIONS

Pole Shaft

Hot rolled commercial quality welded steel tubing, 1 piece fabrication with minimum yield strength of 42,000 PSI.

Mounting

Pre-drilled for 4 fixtures at 90° (Square Pole) and 2 fixtures at 180° (Round Pole). Includes plugs.

Finish

Dark Bronze.

Handhole

3" wide x 5" tall (Square), 2 1/2" wide x 5" tall (Round), 12" from the base.

Special Base Plate

2-piece ABS plastic base cover, rivets are included to secure pieces.

Anchor Bolts

Set of 4 steel anchor bolts (075"/1" x 17"/30"/36" x 3"), includes nuts and washers.

ORDERING GUIDE (SQUARE)

NOTE: Each pole requires anchor bolts, a base, and a top.

Example: SSSP 25 400 11 X BZ

| Pole Type | Pole Height | Width | Gauge | Mount | Finish | Anchor Bolts | Pole Base | Pole Top Cap |
|-----------------------------------|------------------------------|------------------|---------------|--|---------------------|--|--|---|
| • SSSP Steel Straight Square Pole | • 15 15 Feet • 20 20 Feet | • 400 4" x 4" | • 11 11 Gauge | • X Pre-drilled for 4 fixtures at 90° | • BZ Dark Bronze | • PAB-3/4x17X3-PP Anchor Bolts, 1 set with 4pcs 3/4" x 17" x 3" with Positioning plate. | • PBCS-400-BZ Pole Base Cover Square, 4" x 4", Dark Bronze. | • PTCS-400-BZ Pole Top Cap Square, 4" x 4", Dark Bronze. |
| | • 25 25 Feet | | | | | | | |
| | • 30 30 Feet | • 500 5" x 5" | • 7 7 Gauge | | | | | |
| | | | | | | • PAB-1x36x43-PP Anchor Bolts, 1 set with 4pcs 1" x 36" x 4" with Positioning plate. | | |

ORDERING GUIDE (ROUND)

NOTE: Each pole requires anchor bolts, a base, and a top.

Example: SRSP 25 400 11 B BZ

| Pole Type | Pole Height | Diameter | Gauge | Mount | Finish | Anchor Bolts | Pole Base | Pole Top Cap |
|----------------------------------|--|----------------------|---------------|---|---------------------|--|---|--|
| • SRSP Steel Straight ROUND Pole | • 15 15 Feet • 20 20 Feet • 25 25 Feet | • 400 4" Diameter | • 11 11 Gauge | • B Pre-drilled for 2 fixtures at 180° | • BZ Dark Bronze | • PAB-3/4x17X3-PP Anchor Bolts, 1 set with 4pcs 3/4" x 17" x 3" with Positioning plate. | • PBCR-400-BZ Pole Base Cover Round, 4" Diameter, Dark Bronze. | • PTCR-400-BZ Pole Top Cap Round, 4" Diameter, Dark Bronze. |
| | | | | | | | | |
| | | | | | | | | |

Due to continuous product improvements, specification and/or equipment updates may change without notice.

TECHNICAL INFORMATION

| Catalog Number | Finish | Height | Width/Diameter | Gauge | Mount | Base Width | Bolt Circle | Bolt Circle Range | Base Thickness | Weight |
|---------------------|-------------|--------|----------------|-------|--------------------------------|------------|-------------|-------------------|----------------|---------|
| SSSP 15 400 11 X BZ | Dark Bronze | 15' | 4" x 4" | 11 | Drilled for 4 fixtures at 90° | 10.5" | 9.5" | 8 - 11" | 0.75" | 113 lbs |
| SSSP 20 400 11 X BZ | Dark Bronze | 20' | 4" x 4" | 11 | Drilled for 4 fixtures at 90° | 10.5" | 9.5" | 8 - 11" | 0.75" | 138 lbs |
| SSSP 25 400 11 X BZ | Dark Bronze | 25' | 4" x 4" | 11 | Drilled for 4 fixtures at 90° | 10.5" | 9.5" | 8 - 11" | 0.75" | 240 lbs |
| SSSP 30 500 7 X BZ | Dark Bronze | 30' | 5" x 5" | 7 | Drilled for 4 fixtures at 90° | 11" | 11.3" | 10.6 - 12" | 1" | N/A |
| SRSP 15 400 11 B BZ | Dark Bronze | 15' | 4" | 11 | Drilled for 2 fixtures at 180° | 10.5" | 9.5" | 8 - 11" | 0.75" | 100 lbs |
| SRSP 20 400 11 B BZ | Dark Bronze | 20' | 4" | 11 | Drilled for 2 fixtures at 180° | 10.5" | 9.5" | 8 - 11" | 0.75" | 120 lbs |
| SRSP 25 400 11 B BZ | Dark Bronze | 25' | 4" | 11 | Drilled for 2 fixtures at 180° | 10.5" | 9.5" | 8 - 11" | 0.75" | 145 lbs |

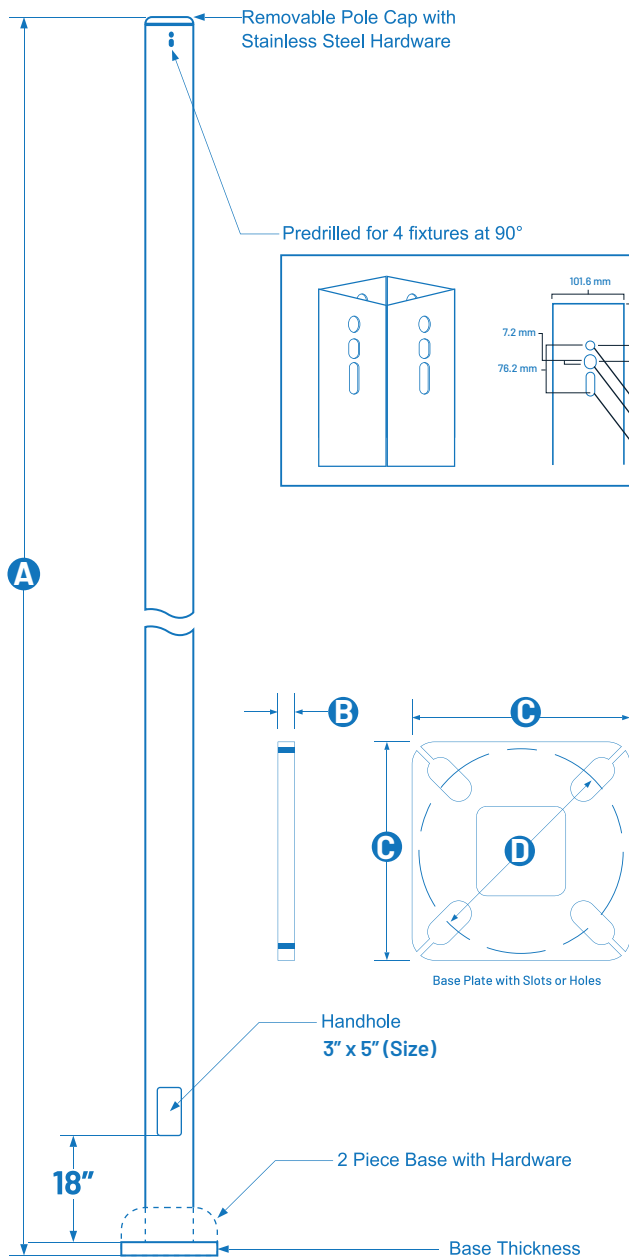
EPA RATING (WITH 1.3 GUST FACTOR)

| Catalog Number | 80 MPH | 90 MPH | 100 MPH | 110 MPH | 120 MPH | 140 MPH | 160 MPH | 170 MPH |
|---------------------|-----------|------------|------------|------------|-----------|-----------|-----------|-----------|
| SSSP 15 400 11 X BZ | N/A | 12.5 sq ft | 9.75 sq ft | 7.75 sq ft | 6.2 sq ft | N/A | N/A | N/A |
| SSSP 20 400 11 X BZ | N/A | 8 sq ft | 5.7 sq ft | 4.3 sq ft | 3.1 sq ft | N/A | N/A | N/A |
| SSSP 25 400 11 X BZ | N/A | 8.3 sq ft | 6 sq ft | 4.25 sq ft | 3 sq ft | N/A | N/A | N/A |
| SSSP 30 500 7 X BZ | N/A | N/A | N/A | N/A | 9.0 sq ft | 4.8 sq ft | 2.2 sq ft | 1.2 sq ft |
| SRSP 15 400 11 B BZ | 9.6 sq ft | 7.4 sq ft | 5.9 sq ft | N/A | N/A | N/A | N/A | N/A |
| SRSP 20 400 11 B BZ | 2.4 sq ft | 1.4 sq ft | N/A | N/A | N/A | N/A | N/A | N/A |
| SRSP 25 400 11 B BZ | 6.0 sq ft | 4.4 sq ft | 3.4 sq ft | N/A | N/A | N/A | N/A | N/A |

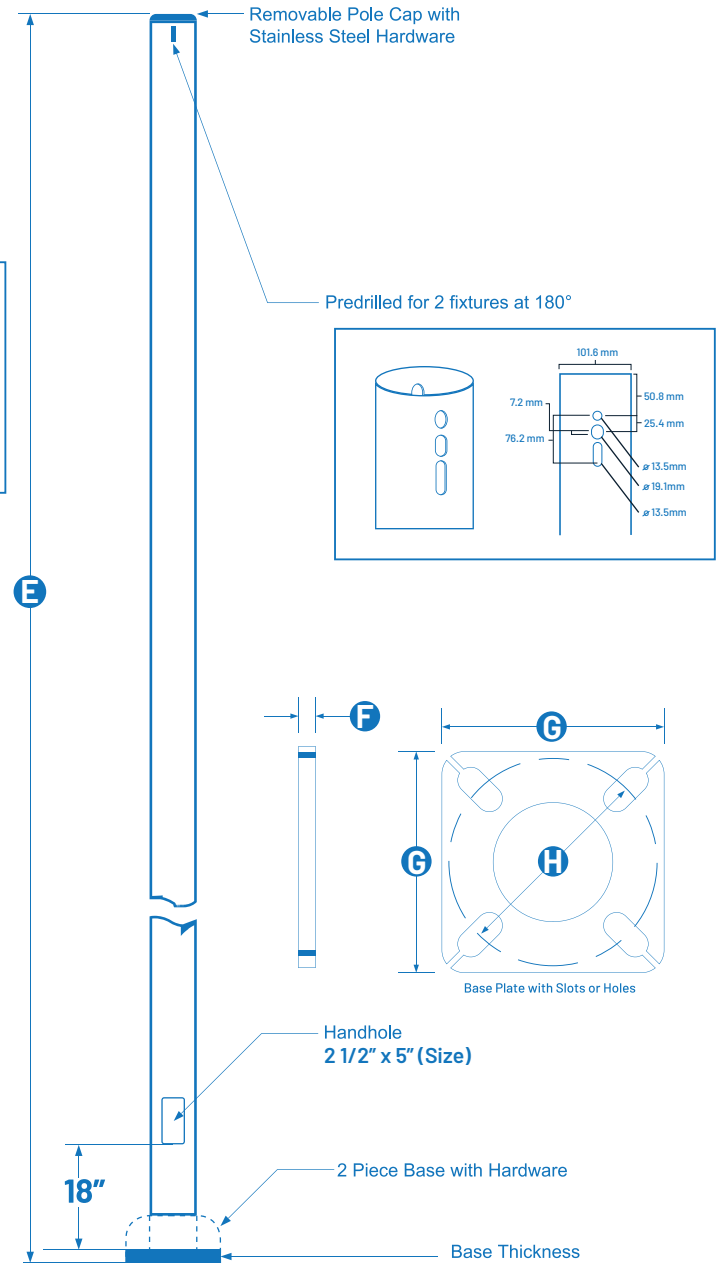
Due to continuous product improvements, specification and/or equipment updates may change without notice.

DIMENSIONS

SQUARE



ROUND



LEGEND (Square)

| Pole | A (Height) | Diameter | Gauge | B (Base Height) | C (Base Width) | D (Bolt Circle) |
|-------------|------------|----------|-------|-----------------|----------------|-----------------|
| SSSP 15 400 | 15' | 4" x 4" | 11 | 0.75" | 10.5" | 9.5" |
| SSSP 20 400 | 20' | 4" x 4" | 11 | 0.75" | 10.5" | 9.5" |
| SSSP 25 400 | 25' | 4" x 4" | 11 | 0.75" | 10.5" | 9.5" |
| SSSP 30 500 | 3' | 5" x 5" | 7 | 0.75" | 11" | 11.3" |

LEGEND (Round)

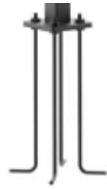
| Pole | E (Height) | Diameter | Gauge | F (Base height) | G (Base Width) | H (Bolt Circle) |
|-------------|------------|----------|-------|-----------------|----------------|-----------------|
| SRSP 15 400 | 15' | 4" | 11 | 0.75" | 10.5" | 9.5" |
| SRSP 20 400 | 20' | 4" | 11 | 0.75" | 10.5" | 9.5" |
| SRSP 25 400 | 25' | 4" | 11 | 0.75" | 10.5" | 9.5" |

Due to continuous product improvements, specification and/or equipment updates may change without notice.

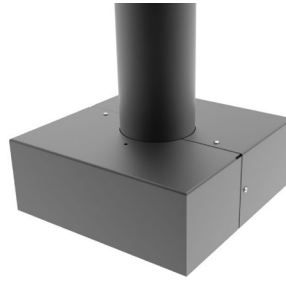
COMPONENTS (SQUARE)



PTCS-X00-BZ
Pole Top Cap



PAB-XxXxX-PP
Anchor Bolts, 1 set, 4 pcs in varying sizes for each pole length.



PBCS-X00-BZ
Pole Base cover, available in 4"x4" and 5" x 5", Dark Bronze.

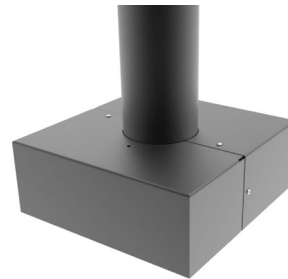
COMPONENTS (ROUND)



PTCS-X00-BZ
Pole Top Cap



PAB-XxXxX-PP
Anchor Bolts, 1 set, 4 pcs in varying sizes for each pole length.



PBCS-X00-BZ
Pole Base cover, available in 4"x4" and 5" x 5", Dark Bronze.

Due to continuous product improvements, specification and/or equipment updates may change without notice.