

PROJECT: _____
 CATALOG #: _____
 FIXTURE TYPE: _____
 NOTES: _____

VTC Vapor Tight Contractor Series Gen 1



VTC 8



VTC 4



The *VTC Vapor Tight Gen 1 Contractor Series* are engineered for powerful lighting in harsh environments. Utilizing efficient LEDs and drivers to provide high performance and greater energy savings. This cost efficient, enclosed and gasketed fixture is ideal for utility lighting and comes in 4 ft and 8 ft.

APPLICATIONS

Cold Storage, Food Processing Facilities, Parking Garage, Pathway Lighting, etc.

REPLACEMENT

- 3 Lamp T8 17W
- 3 Lamp T8 32W
- 4 Lamp T8 32W

PERFORMANCE INFORMATION

| SERIES NUMBER | SIZE | WATT | LUMENS | CCT |
|-----------------|------|------|--------|-------|
| VTC 4 50 G1 4K | 4 ft | 38W | 4,940 | 4000K |
| VTC 4 50 G1 5K | 4 ft | 38W | 4,980 | 5000K |
| VTC 4 70 G1 4K | 4 ft | 52W | 6,760 | 4000K |
| VTC 4 70 G1 5K | 4 ft | 52W | 6,810 | 5000K |
| VTC 8 120 G1 4K | 8 ft | 90W | 11,710 | 4000K |
| VTC 8 120 G1 5K | 8 ft | 90W | 11,790 | 5000K |

OPTIONS



EL UNV-10W



BRI819P-B-P-D-S

| ORDERING GUIDE | | | | | | | EXAMPLE: VTC 4 50 G1 4K |
|---|---------------------|--|------------|---------------------------|------------------------------------|-----------------------------|---|
| Luminaire Type | Size | Lumen Output | Generation | Voltage | CCT | Finish | Options |
| VTC Vapor Tight Contractor Series | 4= 4 feet | 50 4,940 Lumens 70 6,760 Lumens | G1 | BLANK= 120-277V | 4K 4000K 5K 5000K | BLANK= Light Gray | BLANK= No Option SRP-280= Trans remote programmer used for LRD-509 series sensor BRI819P-B-P-D-S= PIR Motion/Photo Sensor, 120/277V AC, 1-10V Dimming (Choose one) L1= 360° Lens (Max. 25ft mounting height) L2= 360° Lens (Max. 40ft mounting height) EL UNV-10W= Emergency Backup Controller |
| | 8= 8 feet | 120 11,700 Lumens | | | | | |

Due to continuous product improvements, specification and/or equipment updates may change without notice.

SPECIFICATIONS

HOUSING

Impact resistant polycarbonate with stainless steel door clips includes opening for conduit and bushing/cord entry. High temperature silicone gasket for improved waterproof performance included.

AMBIENT TEMPERATURE

Suitable for use in -40°C to 50°C (-40°F to 122°F)

MOUNTING

Stainless steel snaps on brackets included for surface mounting. Standard V-Hook brackets included for suspended mounting.

EFFICACY

Up to 131 lumens per watt (see individual wattage data)

CCT AND CRI

4000K and 5000K CCT available; >80CRI
Color temperature does not shift more than 200K CCT in 5 years.

OPTICS

Frosted polycarbonate lens for low glare and maximum protection.

WARRANTY

5-year limited warranty. Comprehensive warranty terms can be located on www.slgus.com.

ELECTRICAL

Standard 50/60Hz operation with 120/277V input. Standard 0-10V dimming driver.

LIFESPAN

LED light engines are rated > 54,000 at 25°C, L70

FINISH

Polyester Powder Light Gray finish.

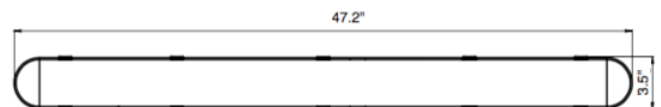
CERTIFICATIONS

UL Listed for wet locations. Equivalent to IP65 rating. FCC compliant. RoHs compliant. Design Lights Consortium® (DLC) Standard 5.1 qualified product. Not all versions of this product may be DLC qualified. Please visit www.slgus.com to confirm which versions are qualified. Please visit www.slgus.com to confirm additional certifications.

DIMENSIONS

Depth: 3.1"

VTC 38W/52W (4ft)
Weight: 4.45lb



VTC 90W (8ft)
Weight: 7.78lb

Due to continuous product improvements, specification and/or equipment updates may change without notice.

OPTIONS



BR1819-P-B-P-D-S
Motion Sensor, 1-10V Dimming

The **BR1819-P-B-P-D-S** provides multi-level occupancy control with 1-10V adjustable dimming. This motion sensor can be attached externally to the fixture. Requires L1 or L2 lens depending on the mounting height.

| Operation Voltage | Shape | Adjustable Time Delay | Operation Temperature | Mounting Height for L1 | Mounting Height for L2 |
|-------------------|-------|------------------------------|-----------------------------------|------------------------|------------------------|
| 120/277V | Cone | 10 sec - 60 min (adjustable) | -40°F to 167°F (-40°C to 75°C) | Max 25ft* | Max 40ft** |

* Covers a 30 ft diameter when the mounting height is 25 ft.

** Covers a 60 ft diameter when the mounting height is 40 ft.

ELECTRICAL LOAD

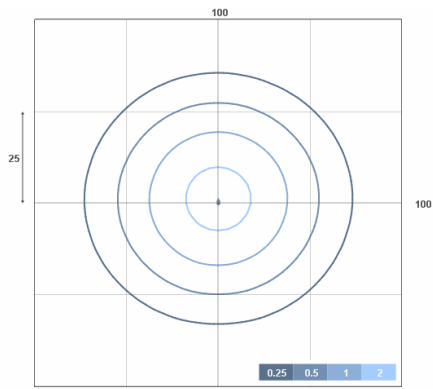
| Series Number | Wattage | Current (A) | | | | | |
|-----------------|---------|-------------|------|------|------|------|------|
| | | 120V | 208V | 240V | 277V | 347V | 480V |
| VTC 4 50 G1 5K | 38W | 0.32 | 0.18 | 0.16 | 0.14 | 0.11 | 0.08 |
| VTC 4 70 G1 5K | 52W | 0.43 | 0.25 | 0.22 | 0.19 | 0.15 | 0.11 |
| VTC 8 120 G1 5K | 90W | 0.75 | 0.43 | 0.38 | 0.32 | 0.26 | 0.19 |

PERFORMANCE DATA

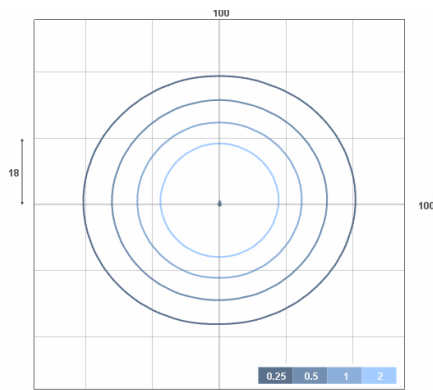
| Series Number | Wattage | 4000K | | 5000K | |
|---------------|---------|--------|----------|--------|----------|
| | | Lumens | Efficacy | Lumens | Efficacy |
| VTC 4 50 G1 | 38W | 4,940 | 130 | 4,980 | 131 |
| VTC 4 70 G1 | 52W | 6,760 | 130 | 6,810 | 131 |
| VTC 8 120 G1 | 90W | N/A | N/A | 11,790 | 131 |

Due to continuous product improvements, specification and/or equipment updates may change without notice.

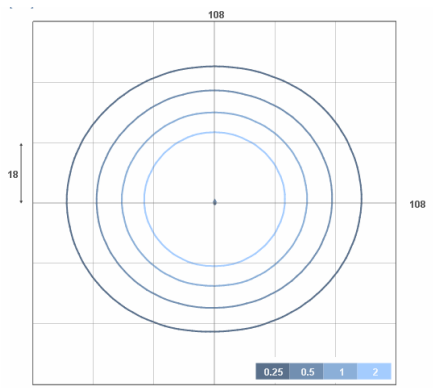
PHOTOMETRIC



VTC 4 50 G1 5K



VTC 4 70 G1 5K



VTC 8 120 G1 5K

| | | | | |
|-----------------|-----|-----|-----|-----|
| Mounting Height | 16 | 18 | 20 | 22 |
| Multiplier | 1.2 | 1.0 | 0.8 | 0.6 |

Due to continuous product improvements, specification and/or equipment updates may change without notice.