

PROJECT: _____
 CATALOG #: _____
 FIXTURE TYPE: _____
 NOTES: _____

HL Series Linear High Bay Gen 1 & Gen 2



The *HL Series Linear High Bay* comes with lumen outputs up to 47,400 lumens. Both Aircraft Cable and Pendant mounting are available. This industrial LED luminaire is ideal for lighting large indoor spaces.

APPLICATIONS

Parking Garages, Walkways, Warehouses, etc.

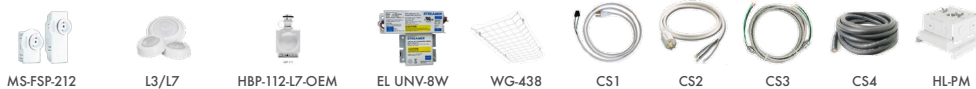
REPLACEMENT

750W MH or 12 Lamp T5HO 54W
 8-10 Lamp T5HO 54W

PERFORMANCE INFORMATION

| SERIES NUMBER | WATT | LUMENS | CCT | SIZE |
|---------------|------|--------|-------|---------|
| HL 438 G1 4K | 320W | 42,400 | 4000K | 2' x 4' |
| HL 480 G2 4K | 320W | 47,400 | 4000K | 2' x 4' |

OPTIONS



| ORDERING GUIDE | | | | | | | EXAMPLE: HL 438 G1 4K |
|-----------------------|-------------------|---|------------|--------------------------------|----------|-------------|---|
| Luminaire Type | Lumen Output | Optic Lens | Generation | Voltage | CCT | Finish | Options |
| HL Linear High Bay | 438 42,400 Lumens | BLANK=Medium Lens AL=Aisle Lens PD=Prismatic Diffuser | G1 | BLANK=120-277V HVU=347-480V | 4K 4000K | BLANK=White | BLANK=No Option MS-FSP-212=Motion Sensor (Choose 1) L3=40' diameter lens L7=100' diameter lens HBP-112-L7-OEM=High/Low-Bay PIR On/Off Sensor EL UNV-8W=Emergency Battery Kit EL UNV-16W=16W Emergency Battery Kit SPD-277= 5KA/10KV Surge Protection device, single phase protection with 120-277V input SPD-480= 10KA/20KV Surge Protection device, single phase protection with 277-480V input WG-438= Wire Guard for HL 438 CS1= 6ft cord, Straight Blade Plug Type for 120V, Black CS2= 6ft cord, Twist-Lock Plug Type for 120-277V, Black CS3= 6ft cord, 600V 12/2 MC Solid Cable, No Plug CS4= 6ft cord, 600V OS Black Cord (No Voltage Required), No Plug HL-PM= Pendant Monopoint Splice Box |
| | 480 47,400 Lumens | | G2 | | | | |

Due to continuous product improvements, specification and/or equipment updates may change without notice.

SPECIFICATIONS

HOUSING

Aluminum alloy with White coat finish

AMBIENT TEMPERATURE

Suitable for use in -40°C to 55°C (-40°F to 131°F)

MOUNTING

Standard Aircraft cable included. Optional pendant fitting for 3/4" conduit.

EFFICACY

Up to 148 lumens per watt (see individual wattage data)

CCT AND CRI

4000K CCT available; 82CRI

OPTICS

Three lens options for aisle, medium, and pattern 12 diffuser. (Optional for low bay performance)

WARRANTY

10-year limited warranty. Comprehensive warranty terms can be located on www.slgus.com.

ELECTRICAL

High quality constant-current driver rated for Class 2 with 50/60Hz operation and 120-277V input. Dimmable LED system using 0-10V dimmer signals. Optional emergency battery pack.

ENERGY DATA

Power factor above 90%.

FINISH

White Polyester Gloss finish with less than 91% reflectivity.

CERTIFICATIONS

UL Listed for damp locations. FCC compliant. RoHs compliant. Design Lights Consortium® (DLC) 5.0 Premium qualified product. HL 438 DLC 4.4 Standard qualified product. Not all versions of this product may be DLC qualified. Please visit www.slgus.com to confirm which versions are qualified.

OPTIONS



MS-FSP-212
Dimmable Motion Sensor



MS-FSP-L3/L7
Lens

The **MS-FSP-212** provides multi-level control base on motion and daylight level. Requires L3 or L7 lens depending on the mounting height.

| Operation Voltage | Shape | Adjustable Time Delay | Fade Down Time | Operating Temperature | Mounting Height For MS-FSP-L3 | Mounting Height For MS-FSP-L7 |
|-------------------|-------|-----------------------|----------------|-----------------------|-------------------------------|-------------------------------|
| 120-277V | Cone | 30 sec - 30 min | 0-10 sec | -40°F to 158°F | 20 ft* | 40 ft** |

*Covers a 40 ft diameter when mounting height is 20 ft. Coverage is equal to 2x the height.

**Covers a 100 ft diameter when mounting height is 40 ft. Coverage is equal to 2.5x the height

Due to continuous product improvements, specification and/or equipment updates may change without notice.

OPTIONS CONT.



M2 (HBP-212-L7-W)
High Bay Sensor, Cont. Dimming

The *HBP-212-L7-W* is designed for indoor high bay or low bay applications.

Mode A Traditional on/off motion sensor.

Mode B Continuous dimming. Turn off when the desired ambient light is reached.

Mode C Continuous dimming. Dim the lights down to minimum desired light level.

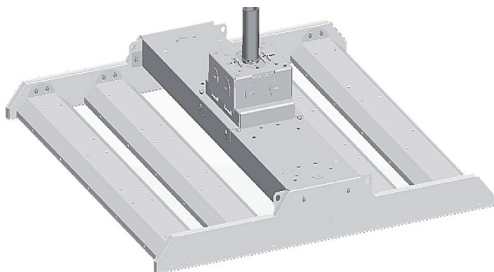
Mode D Continuous dimming. Set different light level for daytime and nighttime.

Mode E Service and setup mode. Adjust time delays and desired light levels.

| Operation Voltage | Mounting Height | Coverage | Shape | Adjustable Time Delay | Operating Temperature | Applications |
|-------------------|-----------------|--------------|-------|-----------------------|-----------------------|--------------|
| 120-277V | 15 - 40 ft | 2.5x Height* | Cone | 30 sec - 30 min | 32°F to 158°F | Indoor Only |

MOUNTING

Conduit Pendant Mount
Field-Installed Accessory

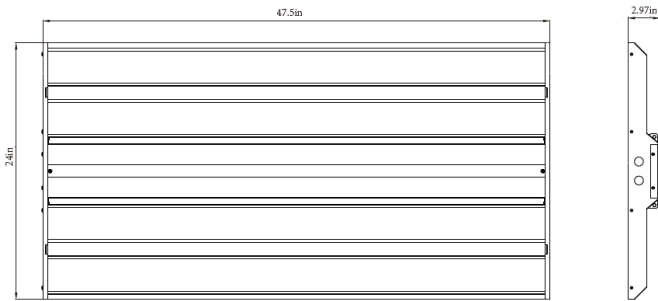


Aircraft Cable Mount



Due to continuous product improvements, specification and/or equipment updates may change without notice.

DIMENSIONS

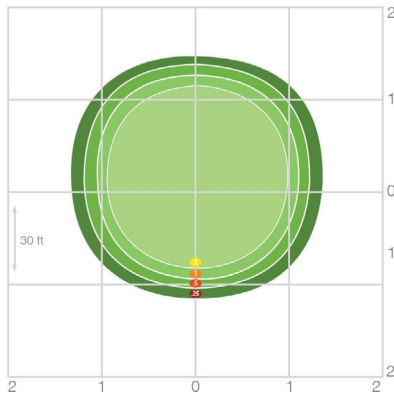


HL 2x4

Weight

HL 438 320W: 29.9 LB
HL 480 320W: 29.8 LB

PHOTOMETRIC



HL 438 G1 4K

| Mounting Height | 20 | 25 | 30 | 35 | 40 |
|-----------------|-----|-----|-----|-----|-----|
| Multiplier | 2.3 | 1.4 | 1.0 | 0.7 | 0.6 |

Due to continuous product improvements, specification and/or equipment updates may change without notice.

PERFORMANCE INFORMATION

| Series Number | Watt | Lumens | CCT | CRI | Voltage | Size |
|---------------|------|--------|-------|-----|----------|---------|
| HL 438 G1 4K | 320W | 42,400 | 4000K | 82 | 120-277V | 2' x 4' |
| HL 480 G2 4K | 320W | 47,400 | 4000K | 70 | 120-277V | 2' x 4' |

PERFORMANCE COMPARISON

| Product Series | Wattage | Lumens | Efficacy (LPW) | Replaces | Voltage | Max Mounting Height | DLC |
|----------------|---------|--------|----------------|-----------------------------|----------|---------------------|----------|
| HL 438 | 320W | 42,400 | 132 Lm/W | 750W MH or 12 Lamp T5HO 54W | 120-277V | 20-40 ft | Standard |
| HL 480 | 320W | 47,400 | 148 Lm/W | 8-10 Lamp T5HO 54W | 120-277V | 20-40 ft | Premium |

ELECTRICAL LOAD

| | | Current (A) | | | | | |
|---------------|---------|-------------|------|------|------|------|------|
| Series Number | Wattage | 120V | 208V | 240V | 277V | 347V | 480V |
| HL 438 G1 4K | 320W | 2.67 | 1.54 | 1.33 | 1.16 | 0.92 | 0.67 |
| HL 480 G2 4K | 320W | 2.67 | 1.54 | 1.33 | 1.16 | 0.92 | 0.67 |

PROJECTED LUMINAIRE MAINTENANCE

| | | Operating Hours | | | | | |
|---------------------|---|-----------------|--------|--------|--------|---------|--|
| Ambient Temperature | 0 | 10,000 | 25,000 | 50,000 | 75,000 | 100,000 | |
| 25°C / 77°F | 1 | 0.98 | 0.95 | 0.86 | 0.79 | 0.72 | |

AMBIENT TEMPERATURE RATING

| Mounting | Suspended | Surface |
|-----------------------------|--------------|--------------|
| Standard Temperature Rating | 131°F / 55°C | 113°F / 45°C |

Due to continuous product improvements, specification and/or equipment updates may change without notice.